

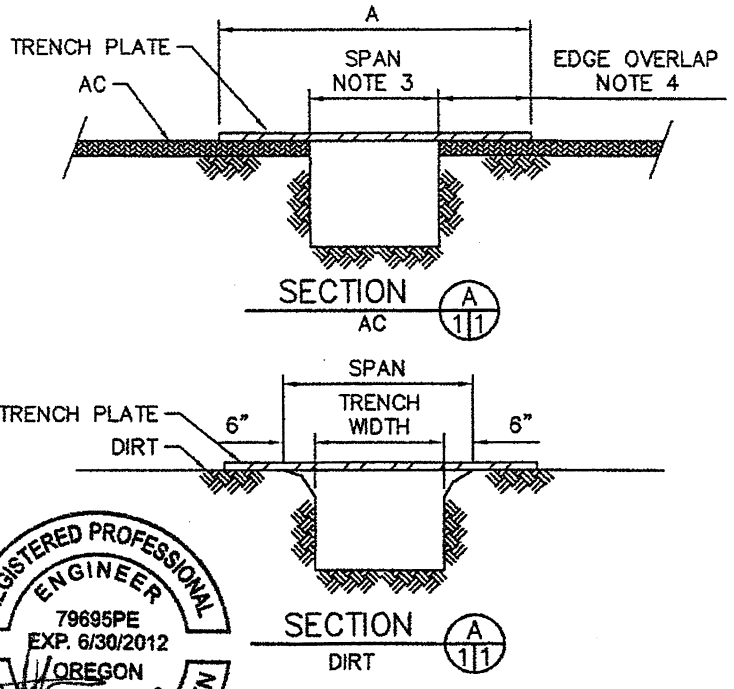
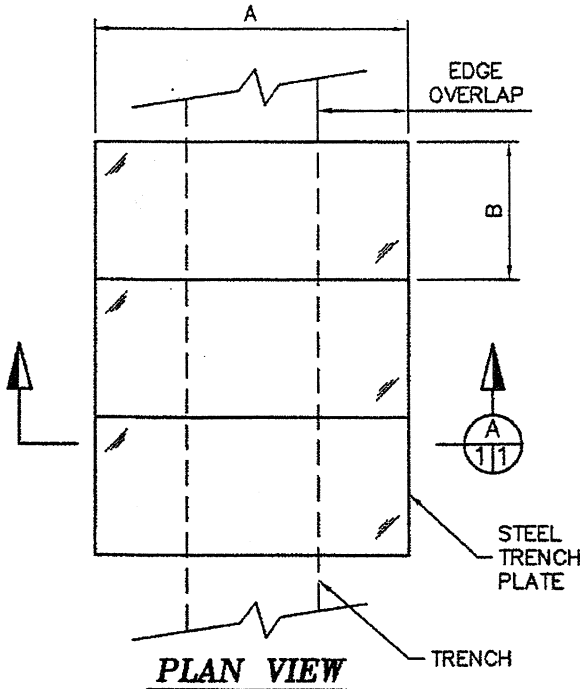
CASCADE SHORING

MANUFACTURERS TABULATED DATA SHEET

STEEL TRENCH CROSSING PLATES

HS-20-44 LOADING

PLATE THICKNESS (IN)	MAX. ALLOW. SPAN (FT)	PLATE SIZE (FT x FT) / WEIGHT (LB)									
		4' x 6'	4' x 8'	5' x 8'	5' x 10'	6' x 10'	6' x 12'	8' x 10'	8' x 12'	8' x 16'	8' x 20'
1"	4'-6"	-	1306 #	1632 #	2042 #	2448 #	-	3264 #	3917 #	5222 #	6528 #
1-1/2"	10'	-	-	-	3062 #	-	-	-	5876 #	7834 #	9792 #



NOTES:

1. PLATES ARE ASTM A36 MIN. STEEL, $F_y = 36$ KSI.
2. PLATES ARE DESIGNED FOR HS-20-44 LOADING.
3. THE SPAN IS FROM ASPHALT EDGE TO ASPHALT EDGE OR TRENCH WIDTH + 12".
4. EDGE OVERLAP SHALL BE AS FOLLOWS:
 - TRAFFIC SPEED LESS THAN 45 MPH; 12" MINIMUM.
 - TRAFFIC SPEED OVER 45 MPH; 24" MINIMUM.
5. CHART IS BASED ON STABLE TRENCH. STABILITY TO BE DETERMINED BY COMPETENT PERSON OR ENGINEER.
6. IF SPEED EXCEEDS 45 mph, PLATE MAY REQUIRE ANCHORAGE.
7. IF SPEEDS ARE LOWER THAN 10 mph SPANS MAY BE INCREASED BY 20%.

TITLE:
STEEL TRENCH CROSSING PLATES



7410-B SE JOHNSON CREEK BLVD.
PORTLAND, OR 97206
PH: (503) 777-2017

J.M. TURNER ENGINEERING, INC.
CONSULTING ENGINEERS

1325 COLLEGE AVE., SANTA ROSA, CA 95404
(707) 528-4503 FAX (707) 528-4505

DATE: 11/30/10	REVISED: 01/09/12	FILE NO: 12532-1
-------------------	----------------------	---------------------



Fast-Lok® Safety Lift Eye SAFETY INSTRUCTIONS

CAUTION: PRIOR TO USING FAST-LOK® TOOL, PLEASE READ THE FOLLOWING FOR PROPER INSTALLATION AND USAGE.

- As with all mechanical devices, regular inspection for wear and strict adherence to use instruction is necessary to prevent misuse failure.
- **Caution:** Do not apply side loads in direction shown in FIG 2 & 3 below. Listed capacity is maximum safe working load.
- Despite the 5:1 safety factor, **NEVER EXCEED THE RATED LOAD CAPACITY**. This safety margin is needed in case of misuse, which could drastically lower load capacity.
- Always insert completely for proper lifting. Install Shackle and pin securely on the tool. Periodically check because pin could disengage with extended service.
- Condition of parent material should be checked for excessive wear.
- **AVOID SHOCK LOADING**. Always lift gradually. Repeat magnetic particle inspection if shock loading ever occurs.
- When more than one lift eye is used in conjunction with multiple-leg rigging, spreader bars, lifting yokes or lifting beams should be used to reduce angular loading.
- **Angular loading should be avoided. Angular loading occurs in any lift in which the lifting force is applied at an angle to the centerline of the eyebolt shank.**

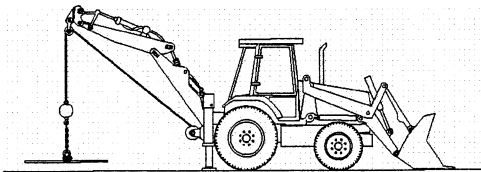


FIG 1

CORRECT

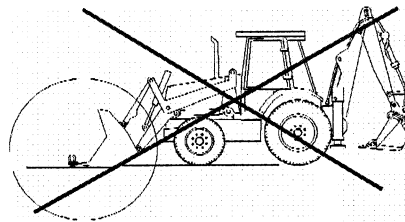


FIG 2

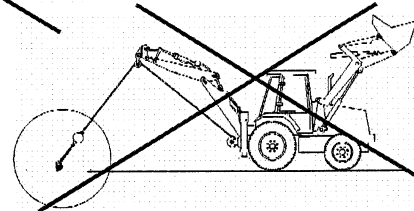


FIG 3

INCORRECT

- Mounting surface must be in acceptable working condition.
- Welded inserts must be perpendicular to the mounting surface.
- Always inspect Fast-Lok before use.
- Never use Fast-Lok that shows signs of excessive wear or damage.
- Never use Fast-Lok if eye or leeds are bent or elongated.
- Always be sure Fast-Lok and receiving holes are clean.
- Never machine, grind or cut Fast-Lok.