

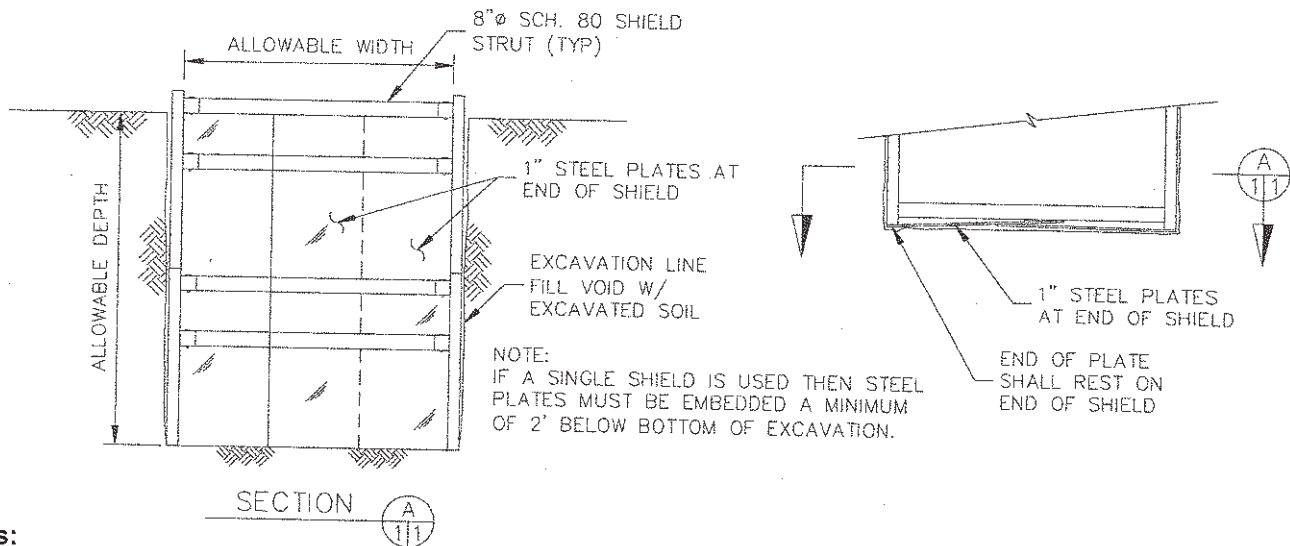
MANUFACTURERS TABULATED DATA SHEET



7410-B SE JOHNSON CREEK BLVD.
 PORTLAND, OR 97206
 PH: (503) 777-2017

Allowable Span for Steel Plates at Ends of Shields					
Shield Length (ft)	Allowable Depth (ft)	Allowable Width (ft)			
		Soil Type	Type B-45	Type C-60	Type C-80
24	15	A-25	B-45	C-60	C-80
	12	16	15	12	9
less than 24	12	16	16	16	13
	15	16	16	16	16

Note-This table only applies to end plate spans. Shoring shields shall be rated for the depths they are used at.



- Notes:**
- 1) All excavations shall be in accordance with Federal OSHA CFR 29, Part 1926, Subpart P.
 - 2) Soil shall be classified in accordance with OSHA Appendix A or by a registered civil engineer prior to installing this equipment.
 - 3) Steel Plates shall be 1" thick. They shall bear on the ends of the shield.
 - 4) Surcharge load shall be determined by a competent person or engineer. The above depth ratings allow a 100 PSF surcharge load. Equipment and spoil piles spaced minimum 2 FT from the edge of the excavation will exert a 100 PSF surcharge load.
 - 5) Shield shall be assembled prior to placing it in excavation.
 - 6) This tabulated data is applicable to any manufacturers shield as long as the spreaders are 8" sch 80 pipe struts.



7410-B SE JOHNSON CREEK BLVD.
 PORTLAND, OR 97206
 PH: (503) 777-2017



SHIELD END PLATES		
J.M. TURNER ENGINEERING, INC. CONSULTING ENGINEERS		
1325 COLLEGE AVE., SANTA ROSA, CA. 95404 (707) 528-4503 FAX (707) 528-4505		
DATE	REVISED	JOB NO;
2/4/2011	5/6/2011	12621-1